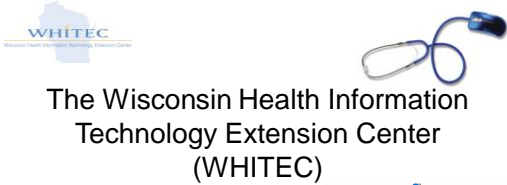


Blumenthal D. Launching HITECH. N Engl J Med. 2010 Jan 4.





The Goal

- Provide education and technical assistance to providers in Wisconsin who need to adopt electronic health record technology and achieve Meaningful Use
 - Regardless of whether you have an EHR
- Offer subsidized services to “priority” primary care providers, critical access hospitals, and rural hospitals



Priority Primary Care Providers (PPCPs)

- MDs, DOs, PAs or NPs with prescribing privileges who specialize in IM, FP, OB/Gyn or Peds within practices of 10 or less providers
- Ambulatory practices connected to public or critical access hospitals
- Community health centers and rural health clinics
- Other ambulatory care settings predominantly serving uninsured, underinsured or medically underserved populations



The WHITEC Approach

- Partnership
 - Enabling you to achieve and sustain meaningful use over time
 - Providers gain skills and tools to make their own changes in an informed and sustainable way
- Promotion of Organizational Change
 - Critical for success: leadership, culture, process, workflow re-design
- Customization to Your Practice
 - Dedicated HIT specialist
 - Uniquely tailored “Roadmap” for assistance
- Mutually Shared Success
 - Milestones are aligned



WHITEC Services

- HIT Specialist assigned to each practice to provide an unbiased, single point of contact to assist through the entire process:
 - **Planning**
 - Project planning, change management, workflow mapping
 - **Selection**
 - Supported vendor list, selection criteria, demo coordination
 - **Implementation**
 - Vendor liaison, workflow redesign, testing and training planning
 - **Meaningful Use**
 - MU assessment, optimization, long-term EHR strategy planning



Fill Out an Application to Get Started with WHITEC!

www.whitec.org

- * Fact Sheet
- * FAQs
- * Meaningful Use & Incentives
- * HIT News & Resources
- * Past Events
- * [Apply to Participate](#)
- * Employment Opportunities
- * \$9.125 Million Federal Grant Awarded for WHITEC



Questions?

WHITEC, operated as a division of MetaStar, is funded through a cooperative agreement award from the Office of the National Coordinator, Department of Health and Human Services Award No. 90RC0011/01